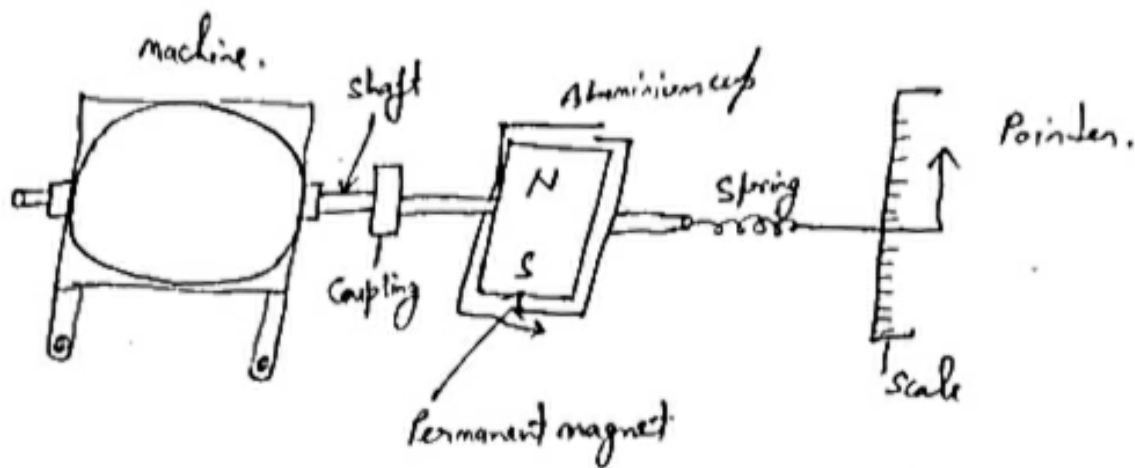


Magnetic drag (or Eddy Current) Tachometer \rightarrow In the magnetic drag type of tachometer, a transducer produces an analog signal in the form of a ~~and~~ eddy current induced in an aluminium cup. The induced current is proportional to the speed.



As the magnet rotates within aluminium cup along with the shaft of the machine, eddy currents are ~~induced~~ induced in the cup which result in a torque or drag that tends to turn (or deflect) the cup against the spring. The deflection of cup is proportional to the induced emf, which in turn is proportional to speed of the shaft. The deflection is shown by pointer.